



Athletic Cases that simplify the demands of the game.

**Custom & Stock Athletic Cases for
Athletic Trainers & Equipment Managers**

www.wilsoncase.com



www.wilsoncase.com

(800)322-5493

sales@wilsoncase.com

Our PRO-SERIES is designed to be the best of the best! These popular cases have all the "bells and whistles" that you have asked for to simplify the demands of your job. Athletic cases in our PRO-SERIES will have a variety of upgrades including drawers on glides, removable trays, 6" turf tires for easy mobility, tilt-bins, removable trays, tape spindles, lockable interior storage and more.



TablePRO-1 #68-718

TablePRO-1 #68-718	
OD (closed): 47.375" x 33.25" x 37.1"	OD (open): 66.5" x 23.6875" x 37.1"
Recessed keyed locks: (2)	6" Turf tires: 8 (3 with brakes)
Drawers on glides: (3) 20.1" x 20.8" x 7.5" ea.	Removable tray: (1) 20" x 15" x 8"
Removable tray: (1) 20" x 15" x 6"	Removable tray: (2) 20" x 15" x 5" ea.
Slide-out tape stations on glides: (2) each includes: - (12) Tape dowels: holds up to (96) 1.5" tape rolls - (4) Tilt-bins: 9" x 9" x 4" - (1) Storage area (behind tilt-bins): 3.5" x 20" x 12.75"	
Storage area for table pads: 1	Snap on padded top: 1
Case material: 3/8" Double laminate	Case weight: 365 Lbs. (approx)



TablePRO-2 #68-769

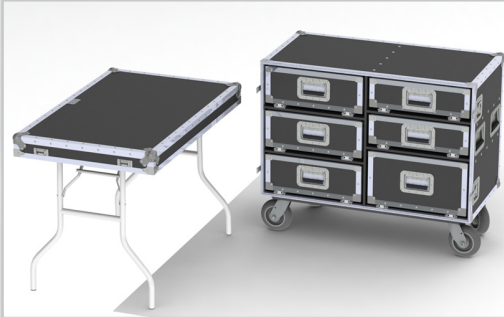
TablePRO-2 #68-769	
OD (closed): 47.375" x 33.25" x 35.8"	OD (open): 66.5" x 23.7" x 35.8"
Recessed keyed locks: (2)	6" Turf Tires: 8 (3 with brakes)
Drawer on glides: (1) 20.1" x 20.8" x 6"	Drawer on glides: (2) 20.1" x 20.8" x 7.4" ea.
Removable tray: (2) 15" x 9.5" x 3.5" ea.	Removable tray: (1) 20" x 15" x 5"
Removable tray: (1) 20" x 15" x 6"	Removable tray: (1) 20" x 15" x 8"
Slide-out tape stations on glides: (2) each includes: - (12) Tape Dowels: Holds up to 84 1.5" tape rolls - (4) Tilt-Bins: 9" x 9" x 4" - (1) Storage Area (behind tilt-bins): 3.5" x 20" x 12.75"	
Storage area for table pads: 1	Case material: 3/8 Double laminate
Case weight: 332 Lbs. (approx)	



TablePRO-3 #68-913

TablePRO-3 #68-913	
OD: 42.375" x 27.875" x 37.125"	Recessed keyed locks: (2)
6" Turf tires: 4 (2 with brakes)	Drawers on glides: (2) 25.6875" x 21.625" x 7.375" each
Drawer on glides : 1 (with slotted foam lining and 4 adjustable dividers) 9.875" x 21.375" x 7.625"	Drawer on glides: 1 (with slotted foam lining and 2 adjustable dividers) 9.875" x 19.625" x 7.5"
Storage area for table pads: 1	Lid with a set of table legs: (1)
Slide-out tape stations on glides: (1) includes: - (12) Tape Dowels: Holds up to 96 1.5" tape rolls - (4) Tilt-Bins: 9" x 9" x 4" - (1) Storage Area (behind tilt-bins): 3.5" x 20" x 12.75"	
Snap on padded top: 1	Case Material: 3/8 Double laminate
Case weight: 243 Lbs (approx)	

Our PRO-SERIES is designed to be the best of the best! These popular cases have all the "bells and whistles" that you have asked for to simplify the demands of your job. Athletic cases in our PRO-SERIES will have a variety of upgrades including drawers on glides, removable trays, 6" turf tires for easy mobility, tilt-bins, removable trays, tape spindles, lockable interior storage and more.



WorkPRO #68-985

WorkPRO #68-985

OD: 41.625" x 25" x 35"	Recessed keyed locks: (2)
Drawers on glides: (3) 18" x 18.625" x 6.75" ea.	Drawers on glides: (2) 18" x 18.625" x 5.125" ea.
Drawer on glides: (1) 18" x 18.625" x 9.875"	Lid with a set of table legs: (1)
6" Turf Tires: 4 (2 with brakes)	Case material: 3/8 Double laminate
Case weight: 216 Lbs. (approx)	



MobileMed #68-713

MobileMed #68-713

OD: 33.48" x 19.23" x 30"	Tilt-bins in lid: (4) 9" x 3" x 4" ea.
Shelves in lid: (3) Adjustable shelves within an area of 9" x 4.25" x 17" This area also has a removable lid to hold items in place when case is closed.	Drawer on glides: (1) 14.25" x 14.25" x 4.26" This drawer is divided into (4) areas that are 6.63" x 6.63" x 4.26" each
Drawer on glides (carpet lined no lid): (1) 14.25" x 14.25" x 11.01"	Drawer on glides (carpet lined no lid): (1) 14.25" x 14.25" x 7.76"
Drawer on glides (no lid, no carpet): (1) 14.25" x 14.25" x 7.76" This drawer houses (16) tape spindles that hold up to (80) 1.5" rolls	
Tabletop area: (1) 32" x 15.5"	Recessed keyed locks: (1)
Heavy duty phenolic casters: 4 (2 with brakes)	Case material: Wilson LT
Case weight: 130 Lbs. (approx)	



MobileMed XL #68-790

MobileMed XL #68-790

OD: 41.5" L x 27.75" D x 33.5" H	Tilt-bins in lid: (12) 9" x 3" x 4" ea.
Drawer on glides: (1) 18.25" x 22.875" x 3.9375" Includes lockable lid. Drawer is divided into (4) 8.625" x 10.9375" x 3.9375" areas	
Drawer on glides with (3) adjustable dividers (slotted foam lined): (1) 16.25" x 22.625" x 7.75"	
Drawer on glides with (3) adjustable dividers (slotted foam lined): 16.25" x 22.625" x 10.875"	
Drawer on glides (no lid, no carpet): (1) 18.25" x 22.875" x 7.75" This drawer houses (18) tape spindles that hold up to (90) 1.5" rolls	
Tabletop area: 40" x 24"	Recessed keyed locks: (3)
6" Turf Tires: 4 (2 with brakes)	Case material: 3/8" Double laminate
Case weight: 234 Lbs.	

*Custom athletic cases also available
contact the Pros at Wilson Case*

Our PRO-SERIES is designed to be the best of the best! These popular cases have all the "bells and whistles" that you have asked for to simplify the demands of your job. Athletic cases in our PRO-SERIES will have a variety of upgrades including drawers on glides, removable trays, 6" turf tires for easy mobility, tilt-bins, removable trays, tape spindles, lockable interior storage and more.



UltiMate 1 #68-428

UltiMate 1 #68-428	
OD: 19" x 19" x 44"	ProLatch organizer trays: (4) 15" x 11.25" x 2.25" ea
Shelves in lid: (3) 4" x 16" ea. (2 are adjustable)	Swing out tape spindles assembly in lid: (2) each holds 24 rolls of 1 1/2" tape
Removable trays: (2) 6" x 11" x 6" ea.	Removable tray: (1) 16" x 11" x 8"
Removable tray: (1) 16" x 11" x 3.5"	Recessed wheels: (3)
Recessed keyed locks: (1)	Case material: Wilson LT
Case weight: 75 Lbs. (approx)	



SportMate I #68-419

SportMate I #68-419	
OD: 19" x 19" x 29"	Shelves in lid: (3) 3.5" x 13.75" ea (2 are adjustable)
Recessed wheels: (3)	Recessed keyed locks: (1)
ProLatch organizer trays: (4) 15" x 11.25" x 2.25" ea	Removable trays: (2) 16" x 11" x 6" ea.
Case material: Wilson LT	Case weight: 56 Lbs. (approx)



SideLinePRO-1 #68-982
Shown with optional tray #10-053

SideLinePRO-1 #68-982	
OD: 37.25" x 25.25" x 32.75"	ID: 36" x 24" x 24"
6" Turf Tires: 4 (2 with brakes)	Tilt-bins in lid: (6) 9" x 3" x 4" ea.
Recessed keyed locks: (1)	Case material: Wilson LT
Case weight: 74 Lbs. (approx)	
Options to add:	
Full-length Tray #10-053 : 34" x 22" x 4"	

*Custom athletic cases also available
contact the Pros at Wilson Case*

Our PRO-SERIES is designed to be the best of the best! These popular cases have all the "bells and whistles" that you have asked for to simplify the demands of your job. Athletic cases in our PRO-SERIES will have a variety of upgrades including drawers on glides, removable trays, 6" turf tires for easy mobility, tilt-bins, removable trays, tape spindles, lockable interior storage and more.



SideLinePRO-2 #68-977
Shown with optional trays
#10-300 & #10-301

SideLinePRO-2 #68-977

OD: 45.625" x 25.625" x 35.125"	ID: 44" x 24" x 26"
6" Turf Tires: 4 (2 with brakes)	Tilt-bins in lid: (12) 9" x 3" x 4" ea.
Recessed keyed locks: (1)	Case material: 3/8 Double laminate
Case weight: 124 Lbs. (approx)	

Options for SideLine PRO 2

Full-length tray #10-300: 42" x 22" x 5"
Dual half-length trays #10-301: 21" x 22" x 5" ea.



DoublePRO-1 #68-980

DoublePRO-1 #68-980

OD: 24.75" x 36.5" x 45"	6" Turf tires: 8 (4 with brakes)
Recessed keyed locks: (1)	Drawers on glides: (3) 21.75" x 16" x 6.5" ea.
Drawer on glides: (1) 21.75" x 16" x 9.5"	Drawer on glides: (1) 21.75" x 16" x 12"
Drawers on glides: (3) 21.75" x 16" x 5.5" ea.	Case material: 3/8 Double laminate
Case weight: 267 Lbs. (approx)	



DoublePRO-2 #68-979

DoublePRO-2 #68-979

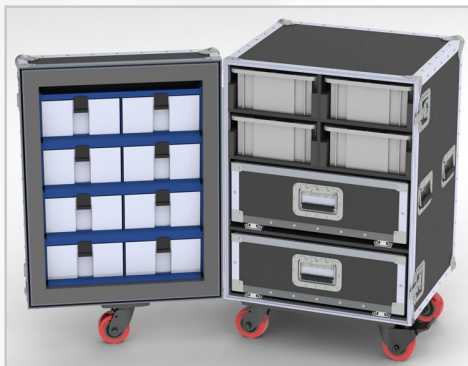
OD: 24.75" x 36.5" x 45"	6" Turf tires: 8 (4 with brakes)
Recessed keyed locks: (1)	ProLatch organizer trays: (4) 15" x 11.25" x 2.25"
Accessory pocket: (1) 5.5" x 15.75" x 11"	Drawers on glides: (3) 21.75" x 16" x 6.5" ea.
Drawer on glides: (1) 21.75" x 16" x 9.5"	Drawer on glides: (1) 21.75" x 16" x 8"
Drawers on glides: (2) 21.5" x 16" x 5.5" ea.	Case material: 3/8 Double laminate
Case weight: 311 Lbs. (approx)	

Our PRO-SERIES is designed to be the best of the best! These popular cases have all the "bells and whistles" that you have asked for to simplify the demands of your job. Athletic cases in our PRO-SERIES will have a variety of upgrades including drawers on glides, removable trays, 6" turf tires for easy mobility, tilt-bins, removable trays, tape spindles, lockable interior storage and more.



#68-990 HotelPRO-1

HotelPRO-1 #68-990	
OD: 25.125" x 26" x 39.5"	Recessed keyed locks: (1)
4" Phenolic casters: (5) 2 with brakes	Drawers on glides: (2) 21.5" x 18" x 6" ea
Dowels on glides: (18) holds up to 90 1.5" tape rolls	Removable trays (1) 22" x 17" x 5" ea
Removable trays (behind inner lockable door): (3) 16" x 11" x 2.5" ea	Tilt-bins in lid: (6) 9" x 3" x 4" ea
Storage area in lid: (1) 23.25" x 11.75" x 4"	Case material: 3/8 Double laminate
Case weight: 178 Lbs. (approx)	



#68-991 HotelPRO-2

HotelPRO2 #68-991	
OD: 25.125" x 26" x 37.5"	Recessed keyed locks: (1)
4" Phenolic casters: (5) 2 with brakes	Drawers on glides: (2) 21.125" x 18.375" x 7.25" ea
Removable trays: (4) 16" x 11" x 5" ea	Tilt-bins in lid: (8) 9" x 3" x 4" ea
Case material: 3/8 Double laminate	Case weight: 161 Lbs. (approx)



#68-955 SplitTopPRO-XL

SplitTop-PRO-XL #68-955	
OD: 28" x 24" x 35.75"	ID (base only): 26" x 22" x 18.75"
ID (each lid): 26" x 9.75" x 7" ea.	6" Turf Tires: 4 (2 with brakes)
Adjustable dividers: (5)	16 Dowel tape assembly: 1
Removable half-length trays: (2) 20" x 11" x 4" ea	Case material: Wilson LT
Case weight: 63 Lbs. (approx)	

Our Classic-Series is a popular collection of tried and true athletic cases, used by athletic professionals in High Schools, Universities, Semi-Pro and Pro teams. They include various case sizes and interior options and are designed to simplify the demands of the game.



#68-640 CheckMate

CheckMate #68-640

OD: 23.25" x 18.5" x 20.25"	Recessed keyed locks: (1)
Recessed wheels: (2)	Pull-out handle: (1)
6" Half trays: (2) 9.25" x 14.75" x 6" ea.	Tilt-bins in lid: (4) 9" x 3" x 4" ea
Adjustable Dividers: (4) in a 7" x 17.5" x 11.875" area	Case material: Wilson LT
Case weight: 38 Lbs. (approx)	

*Custom athletic cases also available
contact the Pros at Wilson Case*



#68-806 SportMate 2

SportMate 2 #68-806

OD: 19" x 19" x 29"	Recessed keyed locks: (1)
Recessed wheels: (3)	Pull-out handle: (1)
Shelves in lid: (3) 3.5" x 13.75" ea. (2 are adjustable)	Removable tray: (1) 16" x 11" x 8"
Removable tray: (1) 16" x 11" x 6"	Removable tray: (1) 16" x 11" x 3.5"
Case material: Wilson LT	Case weight: 50 Lbs. (approx)



#68-807 UltiMate 2

UltiMate 2 #68-807

OD: 19" x 19" x 35.7"	Recessed keyed locks: (1)
Recessed wheels: (3)	Pull-out handle: (1)
Shelf in lid: (1) 17.75" x 4" x 11.4"	ProLatch organizer trays: (2) 15" x 11.25" x 2.25" ea.
Removable trays: (2) 16" x 11" x 6" ea.	Removable tray: (1) 16" x 11" x 8"
Removable tray: (1) 16" x 11" x 3.5"	Swing-out tape spindle assembly: (2) each holds 24 rolls of 1 1/2" tape
Case material: Wilson LT	Case weight: 61 Lbs. (approx)

Our Classic-Series is a popular collection of tried and true athletic cases, used by athletic professionals in High Schools, Universities, Semi-Pro and Pro teams. They include various case sizes and interior options and are designed to simplify the demands of the game.



#68-639 Mini SplitTop

Mini SplitTop #68-639

ID (base only): 17" x 23" x 9.375"	Recessed keyed locks: (1)
Recessed wheels: (2)	Pull-out handle: (1)
Flipside lid: 7.25" x 23" x 6.25" area has 7 tape spindles (42 roll total capacity)	
Flipside lid: 4.75" x 23" x 6.5" area has 3 adjustable dividers	
Lockable inner doors: (2)	Case material: Wilson LT
Case weight: 37 Lbs. (approx)	



#10-112 SplitTop

Shown with options: #10-051,
#10-082 & #10-150

SplitTop #10-112

OD: 28" x 24" x 26"	ID (base): 26" x 22" x 12"
ID (lids): 26" x 9.75" x 7"	Recessed keyed locks: (1)
Heavy duty casters: (4) 1.5" wide x 3.5"	Inner lockable doors: (2)
Case material: Wilson LT	Case weight: 63 Lbs. (approx)

Options to add:

#10-051 Half-length trays: (2) 20" x 11" x 4" each to be installed in base
#10-081 8 Dowel tape assembly to be installed in one flip-side lid
#10-082 16 Dowel tape assembly to be installed in one flip-side lid
#10-050 Adjustable dividers: (5) to be installed in one flapside lid



#10-121 SideLine Trunk

Shown with options:
#10-300 & #10-301

SideLine #10-121

OD: 46" x 26" x 33"	ID: 44" x 24" x 26"
Recessed keyed locks: (1)	Heavy duty casters: (4) 1.5" wide x 3.5"
Case material: 3/8 Double laminate	Case weight: 117 Lbs. (approx)

Options to add:

#10-300 Full-length tray (42" x 22" x 5")
#10-301 Half-length trays 21" x 22" x 5" each (set of 2)
#10-302 Helmet compartment (holds 6 helmets)
#09-042-UP4 6" Turf tire upgrade - set of 4 without brakes
#09-042AB-UP4 6" Turf tire upgrade - set of 4, 2 with brakes

Custom athletic cases also available
contact the Pros at Wilson Case

Our Classic-Series is a popular collection of tried and true athletic cases, used by athletic professionals in High Schools, Universities, Semi-Pro and Pro teams. They include various case sizes and interior options and are designed to simplify the demands of the game.



#10-122 SportLocker 1
Shown with optional tray #10-052

SportLocker 1 #10-122

OD: 32" x 22" x 27"	ID: 30" x 20" x 20"
Recessed keyed locks: (1)	Heavy duty casters: (4) 1.5" wide x 3.5"
Case material: Wilson LT	Case weight: 47 Lbs. (approx)

Options to add:

- 10-052 Full-length tray 28" x 18" x 4"
(Usable space under tray 30" x 20" x 12.5")
- #09-042-UP4 6" Turf tire upgrade - set of 4 without brakes
- #09-042AB-UP4 6" Turf tire upgrade - set of 4, 2 with brakes



#10-142 SportLocker 2
Shown with optional tray #10-053

SportLocker 2 #10-142

OD: 38" x 26" x 31"	ID: 36" x 24" x 24"
Recessed keyed locks: (1)	Heavy duty casters: (4) 1.5" wide x 3.5"
Case material: Wilson LT	Case weight: 62 Lbs. (approx)

Options to add:

- 10-053 Full-length tray 34" x 22" x 4"
(Usable space under tray: 36" L x 24" W x 16.5" H)
- #09-042-UP4 6" Turf tire upgrade - set of 4 without brakes
- #09-042AB-UP4 6" Turf tire upgrade - set of 4, 2 with brakes



#68-611 Double Drawer 1

Double Drawer 1 #68-611

OD: 24.75" x 36.5" x 45"	ID: 23.25" L x 35" D x 38" H
Recessed keyed locks: (1)	Phenolic casters: (8) 2" wide x 4" dia.
Removable trays: (6) 22" x 17" x 8" ea	Removable trays: (2) 22" x 17" x 10" ea
Case material: 3/8 Double laminate	Case weight: 230 Lbs. (approx)

Options to add:

- #09-042-UP4 6" Turf tire upgrade - set of 4 without brakes
- #09-042AB-UP4 6" Turf tire upgrade - set of 4, 2 with brakes

Our Classic-Series is a popular collection of tried and true athletic cases, used by athletic professionals in High Schools, Universities, Semi-Pro and Pro teams. They include various case sizes and interior options and are designed to simplify the demands of the game.



#68-609 Double Drawer 2

Double Drawer 2 Upright #68-609

OD: 24.75" x 36.5" x 45"	ID: 23.25" L x 35" D x 38" H
Recessed keyed locks: (1)	Phenolic casters: (8) 2" wide x 4" dia.
Removable trays: (2) 22" x 17" x 6"	Removable trays: (3) 22" x 17" x 8" ea.
Removable trays: (2) 22" x 17" x 10"	Removable tray: (1) 22" x 17" x 12"
Case material: 3/8 Double laminate	Case weight: 230 Lbs. (approx)

Options to add:

#09-042-UP4 6" Turf tire upgrade - Set of 4 without brakes
#09-042AB-UP4 6" Turf tire upgrade - Set of 4, 2 with brakes



#68-610 Double Drawer 3

Double Drawer 3 Upright #68-610

OD: 24.75" x 36.5" x 45"	ID: 23.25" L x 35" D x 38" H
Recessed keyed locks: (1)	Phenolic Casters: (8) 2" wide x 4" dia.
Removable tray: (1) 22" x 17" x 6"	Removable trays: (5) 22" x 17" x 8"
Removable tray: (1) 22" x 17" x 10"	ProLatch organizer trays: (4) 15" x 11.25" x 2.25" ea.
Accessory pocket: (1) 5.5" x 15.75" x 11"	Case material: 3/8 Double laminate
Case weight: 230 Lbs. (approx)	

Options to add:

#09-042-UP4 6" Turf tire upgrade - set of 4 without brakes
#09-042AB-UP4 6" Turf tire upgrade - set of 4, 2 with brakes



#68-610DP Double Drawer 4

Double Drawer 4 Upright #68-610DP

OD: 24.75" x 36.5" x 45"	ID: 23.25" L x 35" D x 38" H
Recessed keyed locks: (1)	Phenolic casters: (8) 2" wide x 4" dia.
Removable tray: (1) 22" x 17" x 6"	Removable trays: (2) 22" x 17" x 8" ea
ProLatch organizer trays: (4) 15" x 11.25" x 2.25" ea.	Drawers on glides: (3) 23.25" x 16" x 6.5" ea
Accessory pocket: (1) 5.5" x 15.75" x 11"	Drawer on glides: (1) 23.25" x 16" x 9.54"
Case material: 3/8 Double laminate	Case weight: 230 Lbs. (approx)

Custom athletic cases also available
contact the Pros at Wilson Case

Our Classic-Series is a popular collection of tried and true athletic cases, used by athletic professionals in High Schools, Universities, Semi-Pro and Pro teams. They include various case sizes and interior options and are designed to simplify the demands of the game.



#68-342 Shoe/Drawer

Shoe/Drawer Upright #68-342

OD: 24.75" x 36.5" x 45"	ID: 23.25" L x 35" D x 38" H
Recessed keyed locks: (1)	Phenolic casters: (8) 2" wide x 4" dia.
Shoe areas: (15) 7 3/8" x 17 1/2" x 7" ea.	Removable trays: (3) 22" x 17" x 8" ea
Removable tray: (1) 22" x 17" x 10"	Case material: 3/8 Double laminate
Case weight: 213 Lbs. (approx)	

Options to add:

- #09-042-UP4 6" Turf Tire Upgrade - Set of 4 without brakes
- #09-042AB-UP4 6" Turf Tire Upgrade - Set of 4, 2 with brakes



#68-345 Double Shoe

Double Shoe Upright #68-345

OD: 24.75" x 36.5" x 45"	ID: 23.25" L x 35" D x 38" H
Recessed keyed locks: (1)	Phenolic casters: (8) 2" wide x 4" dia.
Shoe areas: (30) 7 3/8" x 17 1/2" x 7" ea.	Case material: 3/8" Double laminate
Case weight: 213 Lbs. (approx)	

Options to add:

- #09-042-UP4 6" Turf Tire Upgrade - Set of 4 without brakes
- #09-042AB-UP4 6" Turf Tire Upgrade - Set of 4, 2 with brakes



#68-344 Shoe/Wardrobe

Shoe/Wardrobe Upright #68-344

OD: 24.75" x 36.5" x 45"	ID: 23.25" L x 35" D x 38" H
Recessed keyed locks: (1)	Phenolic casters: (8) 2" wide x 4" dia.
Shoe areas: (15) 7 3/8" x 17 1/2" x 7" ea.	Wardrobe area: 23.25" x 17.5" x 38"
Case material: 3/8 Double laminate	Case weight: 195 Lbs. (approx)
Case weight: 195 Lbs. (approx)	

Options to add:

- #09-042-UP4 6" Turf tire upgrade - set of 4 without brakes
- #09-042AB-UP4 6" Turf tire upgrade - set of 4, 2 with brakes



#68-343 Double Wardrobe

Double Wardrobe Upright #68-343

OD: 24.75" x 36.5" x 45"	ID: 23.25" L x 35" D x 38" H
Recessed keyed locks: (1)	Phenolic casters: (8) 2" wide x 4" dia.
Wardrobe area: (2) 23.25" x 17.5" x 38" ea.	Case material: 3/8" Double laminate
Case weight: 150 Lbs. (approx)	Case weight: 195 Lbs. (approx)

Options to add:

- #09-042-UP4 6" Turf tire upgrade - set of 4 without brakes
- #09-042AB-UP4 6" Turf tire upgrade - set of 4, 2 with brakes



Athletic Cases that simplify the demands of the game.

Custom & Stock Athletic Cases for Athletic Trainers & Equipment Managers

www.wilsoncase.com



If our PRO-SERIES or CLASSIC-SERIES athletic cases don't meet your needs, we will work with you to design a case that does. Simply contact us to get started on your next athletic case.