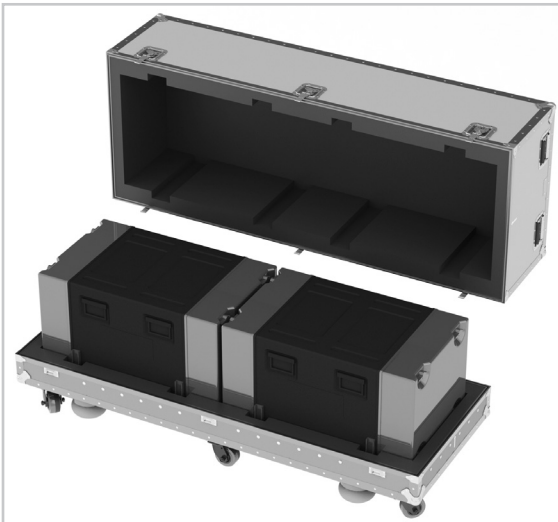




www.wilsoncase.com

CUSTOM & STOCK ATA CASES



STOCK HDTV CASES

Large or small digital signage rides safe in Wilson cases. We have a variety of cases in stock and ready for fast delivery. The Pros at Wilson Case offer custom cases with mechanical lifts, multi-access, multiple displays, braces, skids, turf tires, and anything else you require to simplify the road.



#EZ2032X2 Stock case
holds (2) 20" - 32" displays

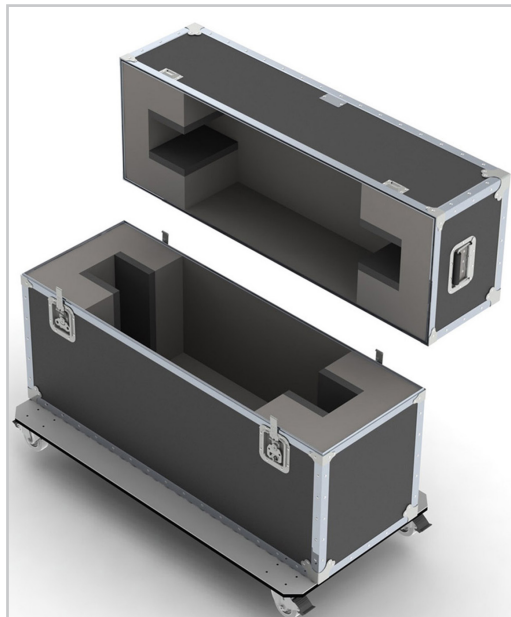


#EZ2432 Stock case
holds (1) 24" - 32" displays



#EZ3240 Stock case
holds (1) 32" - 40" displays

**STOCK
CASES
SHIP
FAST!**



#PL32 Stock case holds 32" - 42" display
#PL42 Stock case holds 42" - 50" display



#PL32X2 Stock case holds (2) 32" - 42" displays
#PL42X2 Stock case holds (2) 42" - 50" displays

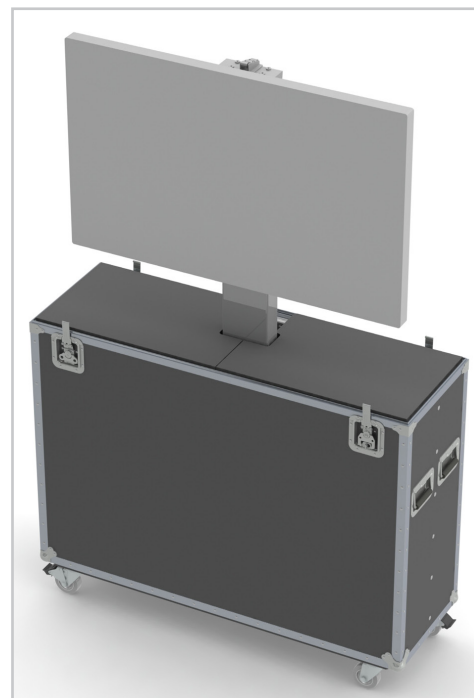
CONFIDENT MOBILITY OF LARGE DIGITAL DISPLAYS



#PL50 Stock case holds
(1) 50" X 60" display

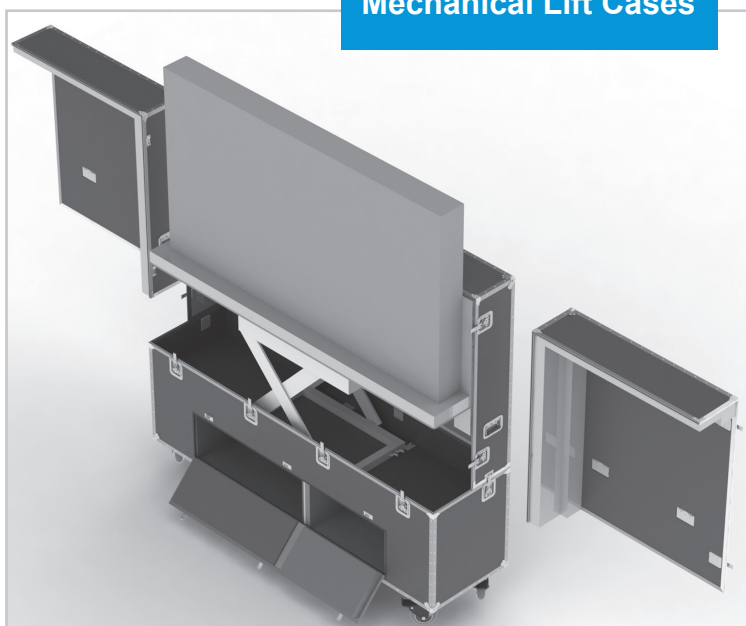


#PL50X2 Stock case holds
(2) 50" X 60" displays



#52-983 Mechanical lift case
for 42" display

Mechanical Lift Cases



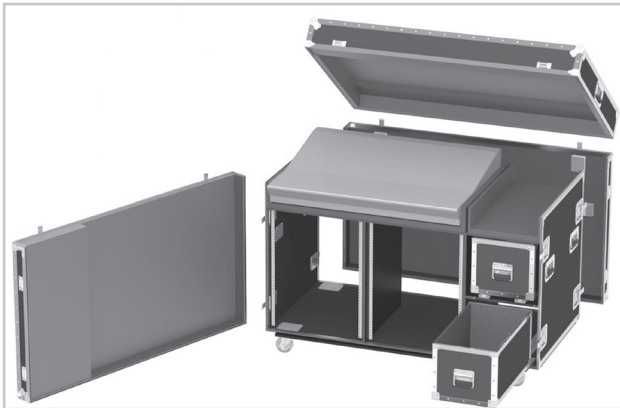
#50-587 90" Digital wall, mechanical lift case
with access doors to the lift and accessory area



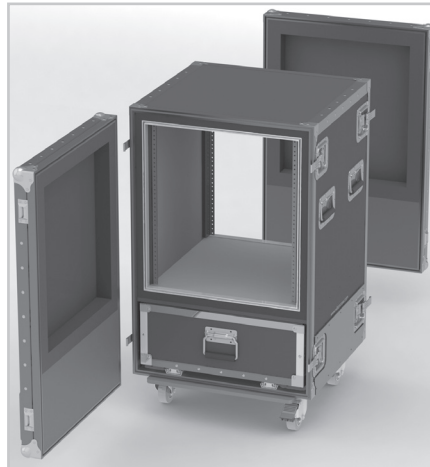
#52-1069 Holds (4) 60" monitors

CUSTOM RACK & SHOCKMOUNT CASES

Rugged, protective rack & shockmount ATA-300 cases designed for safe mobility of sensitive gear, easy set up and easy operation. The Pros at Wilson Case can design a custom case to meet any requirement.



#39-2021 Avid SC-48 Console case with dual 14R X 21" D rack & accessory drawers



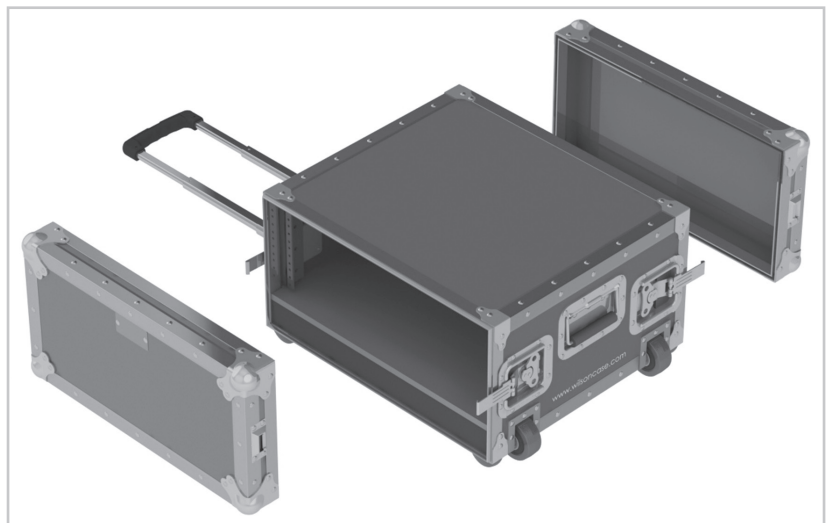
#80-412 12U x 20" D Shockmount with drawer on glides & ramguard



#80-536 25U x 25" D Shockmount with (2) tables



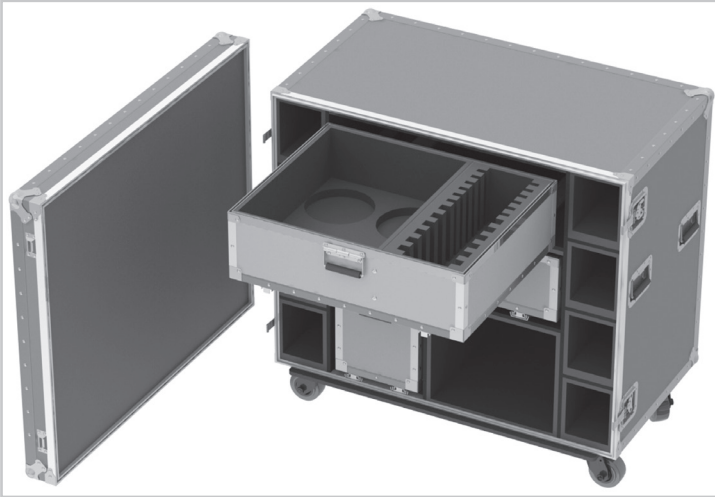
#56-663 11U Slant rack & 18U bottom with table top



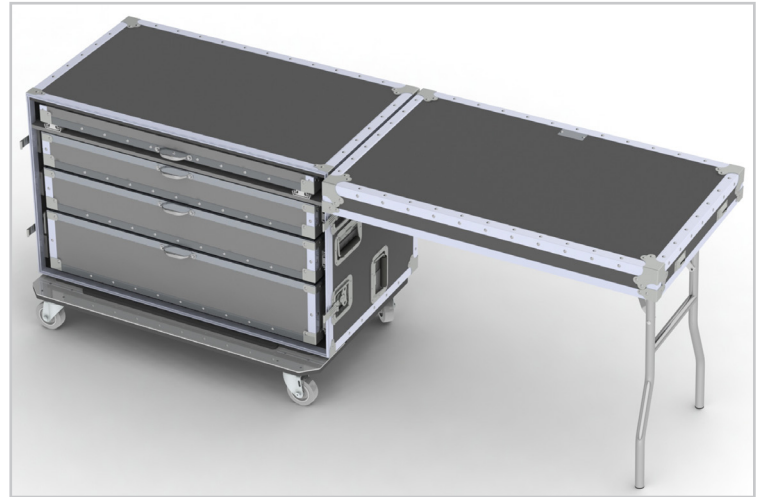
#39-2702 4U x 16" D Front & back rack TagAlong Case

Get the RamGuard

WORK BOXES



#39-2506 Work box



#56-638 Work box with table

Drawers on glides, turf tires, table legs, keyboard pull outs, work tops.
Create the work box that works for you!



#56-656 Work box

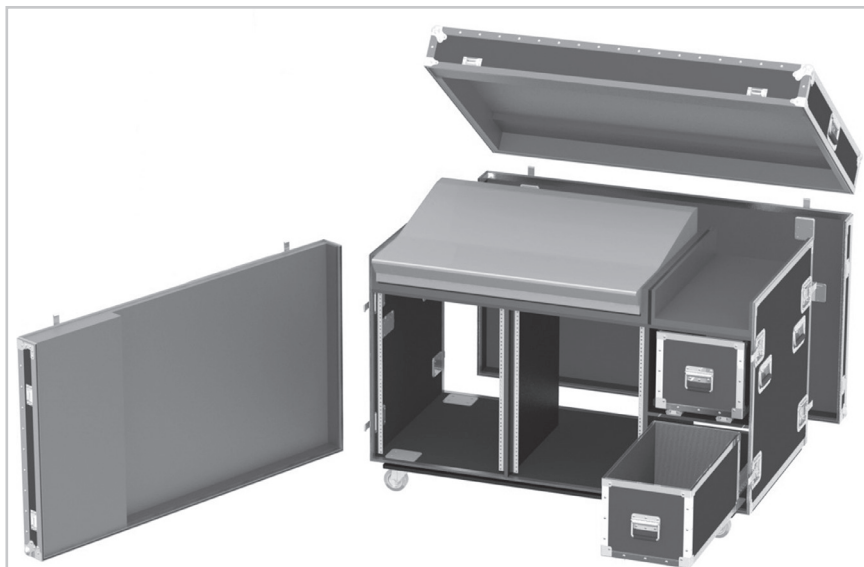


#56-622 Mobile workstation
with keyboard pull-out



#70-532 Workstation
with removable tubs

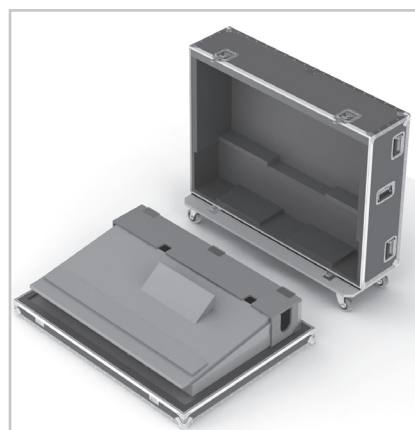
TESTED, PROVEN ROAD CASES FOR SOUND & LIGHTING



#39-2021 Avid SC-48 with dual 14U racks & drawers on glides



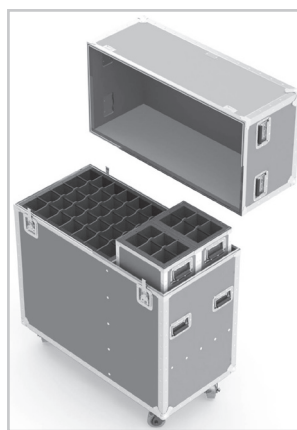
#56-693 ETC Element System



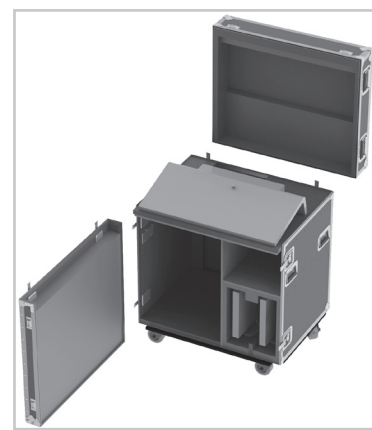
#56-613 Mixer case
with doghouse



#39-2710 Mixer case
with floating doghouse



#56-610 Mics &
StandsCase



#56-634 ETC Element
workstation

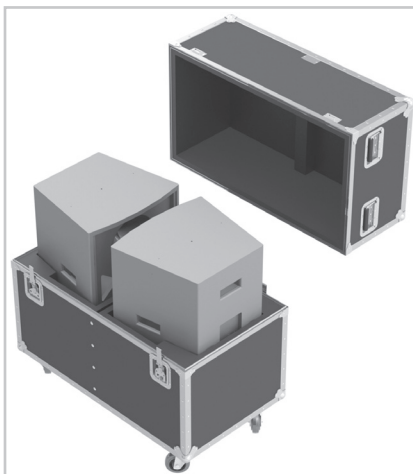
**Keep your event alive with Wilson cases.
Safe Transit, Easy Set Up, Easy Operation.**

www.wilsoncase.com

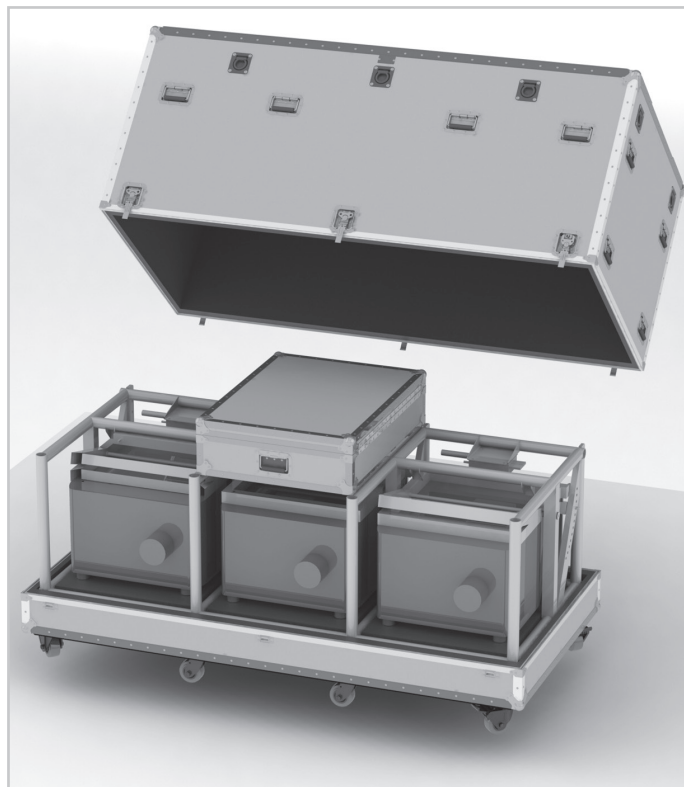
TESTED, PROVEN ROAD CASES FOR SOUND & LIGHTING



#39-2416 Motors



#39-2725 Speakers



#56-659 Projectors



#56-698 Projector



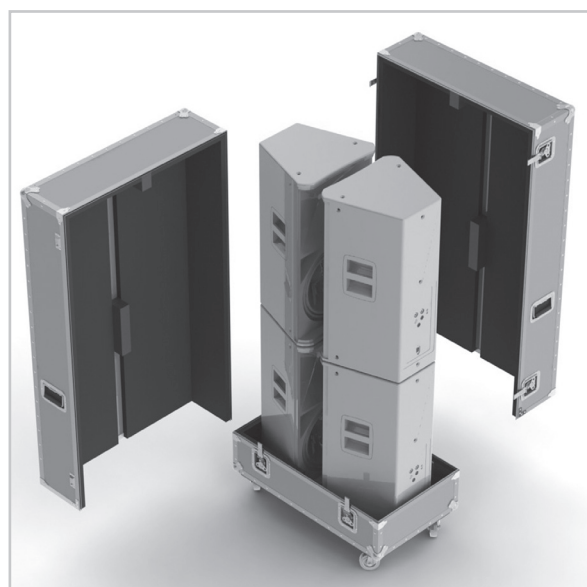
#39-2654 Speakers



#84-3850A Truss



#84-3852A Truss



#56-597 Speakers

TRUCKPAKS



TruckPak	Inside Dimensions	Outside Dimensions	Weight
1/2 X 1/3	43.5" X 28.5" X 24"	45" X 30" X 31"	100
1/2 X 1/4	43.5" X 21" X 24"	45" X 22.5" X 31"	85
1/3 X 1/3	28.5" X 28.5" X 24"	30" X 30" X 31"	77
1/3 X 1/4	28.5" X 21" X 24"	30" X 22.5" X 31"	66
1/4 X 1/4	21" X 21" X 24"	22.5" X 22.5" X 31"	56
2/3 X 1/3	58.5" X 28.5" X 24"	60" X 30" X 31"	123
2/3 X 1/4	58.5" X 21" X 24"	60" X 22.5" X 31"	105
3/4 X 1/3	66" X 28.5" X 24"	67.5" X 30" X 31"	134
3/4 X 1/4	66" X 21" X 24"	67.5" X 22.5" X 31"	114

Options to add to any TruckPak Case

6" or 8" Turf Tires	4" Extra heavy duty red Poly casters
Interior partitions	Motor mounts for any hoist motor
Custom height	1/2" Double laminated panel
Custom interior	Additional colors, logos, stencils
Donut skid caster system	

CASES FOR ROLAND GEAR



#87-181
Roland M-300 Mixer



#39-1367
M-400 or M-4480
Mixer



#87-112
Dual Snakes



#39-1541B
M-380 V Mixer



#39-1757A
V-1600HD

Tough, Rugged, Safe.